

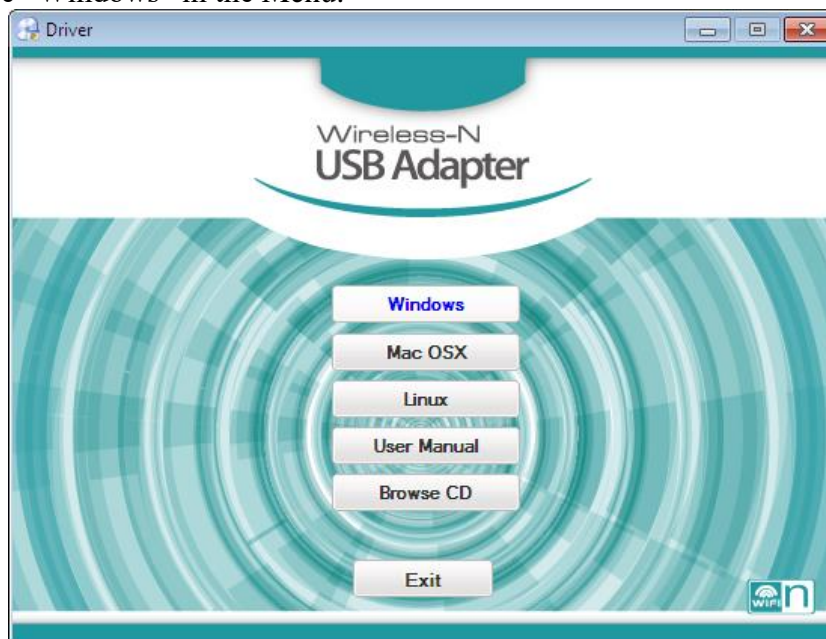
Step-by-Step Installation Guide for Wi-Fi Adapter

Step 1: Assemble the parts and insert the device into a USB port on your computer.

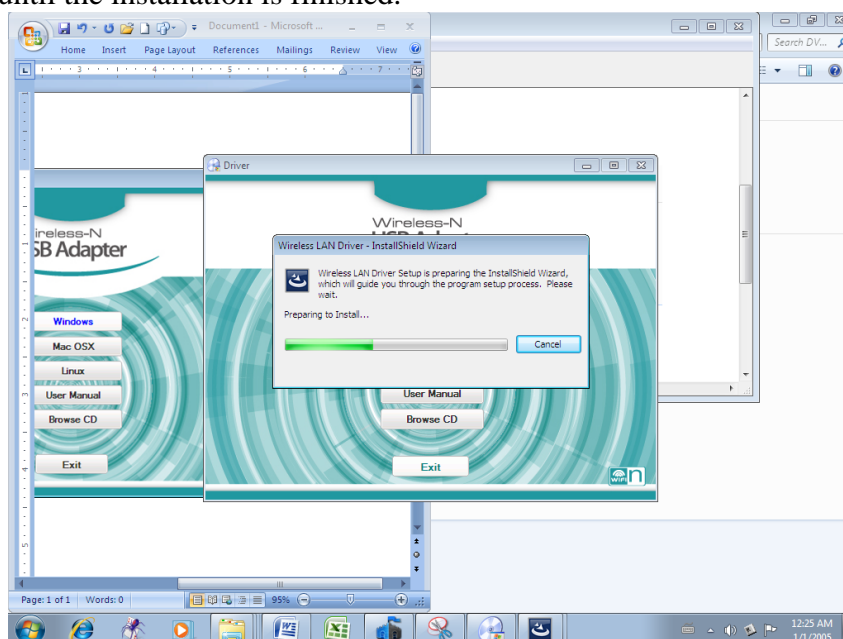
Step 2: Run “autorun.exe” in the disk.

Name	Date modified	Type	Size
Files Currently on the Disc (5)			
LINUX	3/13/2020 3:28 PM	File folder	
MacOS	3/13/2020 3:28 PM	File folder	
Windows	3/13/2020 3:28 PM	File folder	
autorun.exe	3/31/2010 12:39 PM	Application	1,470 KB
User Manual.pdf	10/18/2018 9:32 AM	PDF File	1,691 KB

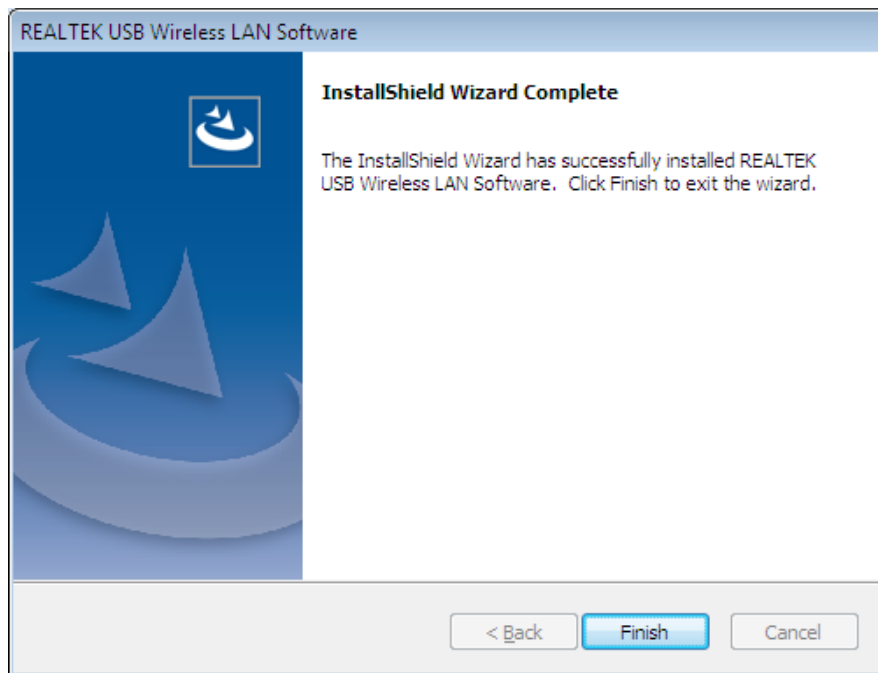
Step 3: Choose “Windows” in the Menu.



Step 4: Wait until the installation is finished.



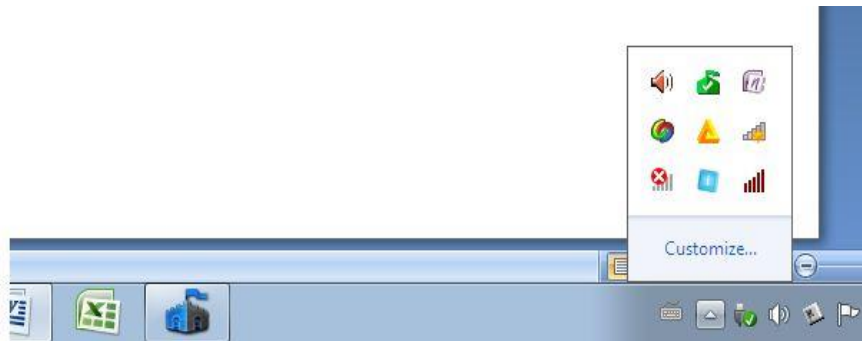
Step 5: Press the “Finish” button.



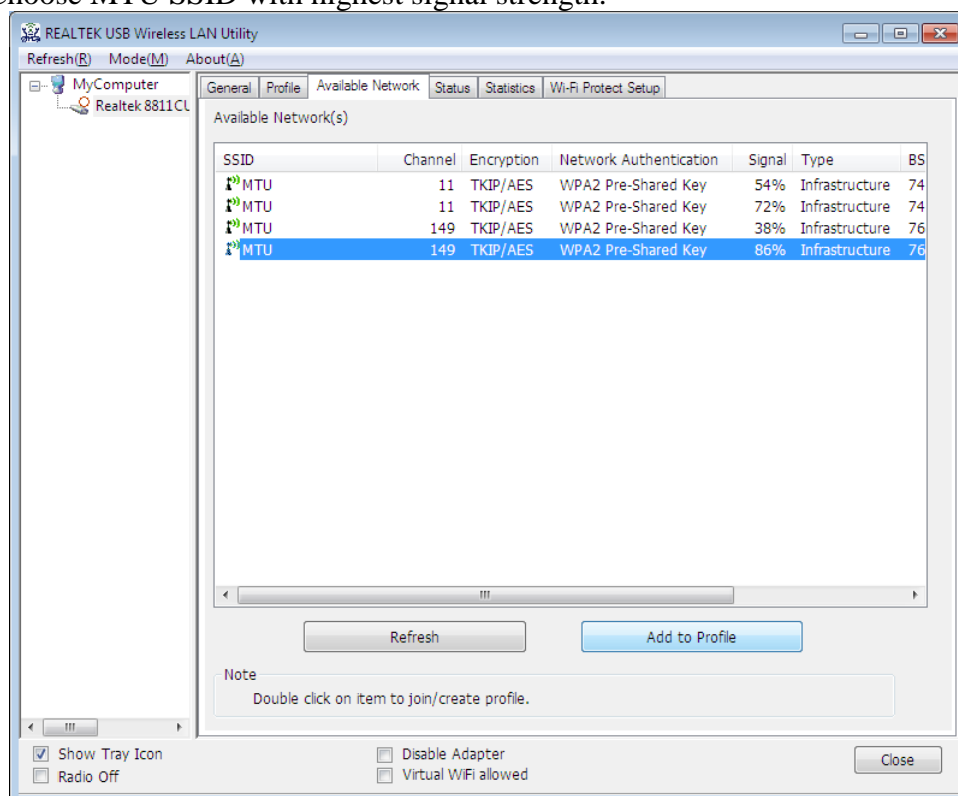
Step 6: Click “Exit” button.



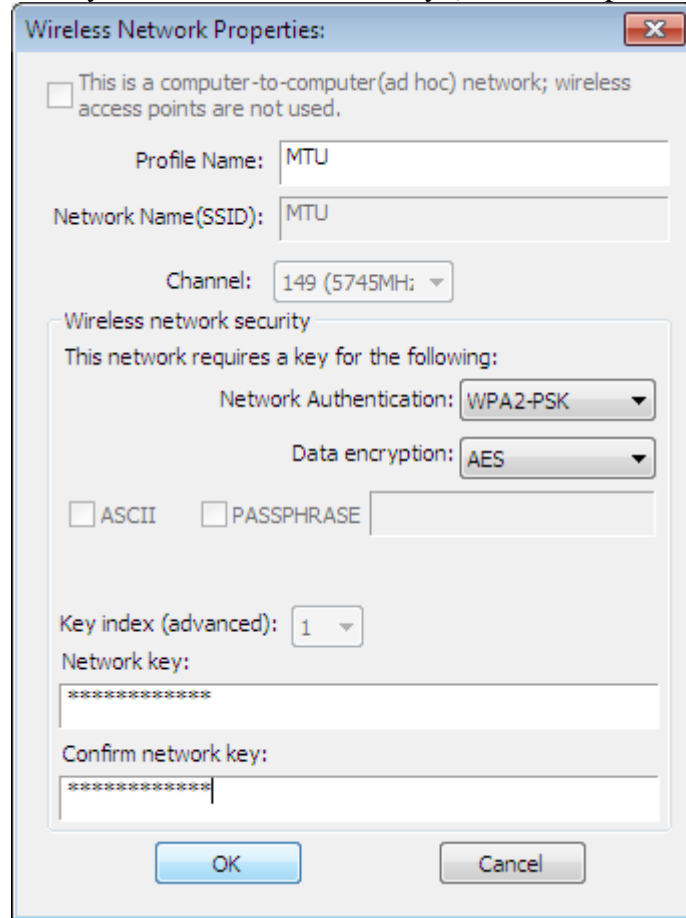
Step 7: After the install is finished, you will see the “Red Wi-fi” sign at the task bar and click it.



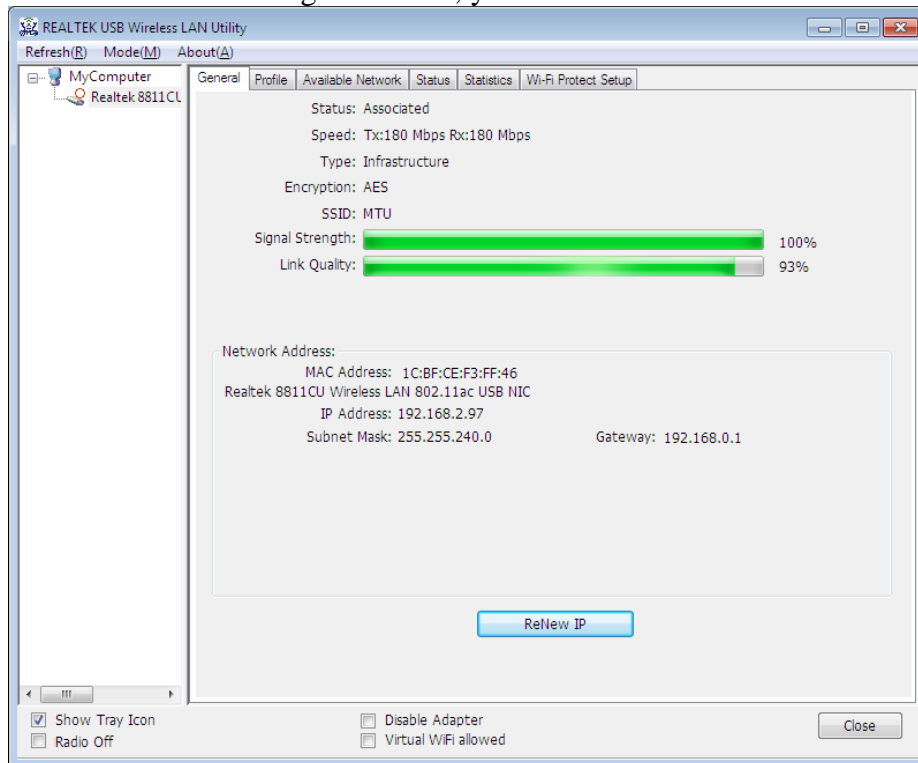
Step 8: Choose MTU SSID with highest signal strength.



Step 9: Fill the Network key and Confirm network key (MTU Wifi password).



Step 10: After the network is being connected, you will see as follows:



Step 11: The network is successful connected after the authentication process.

